

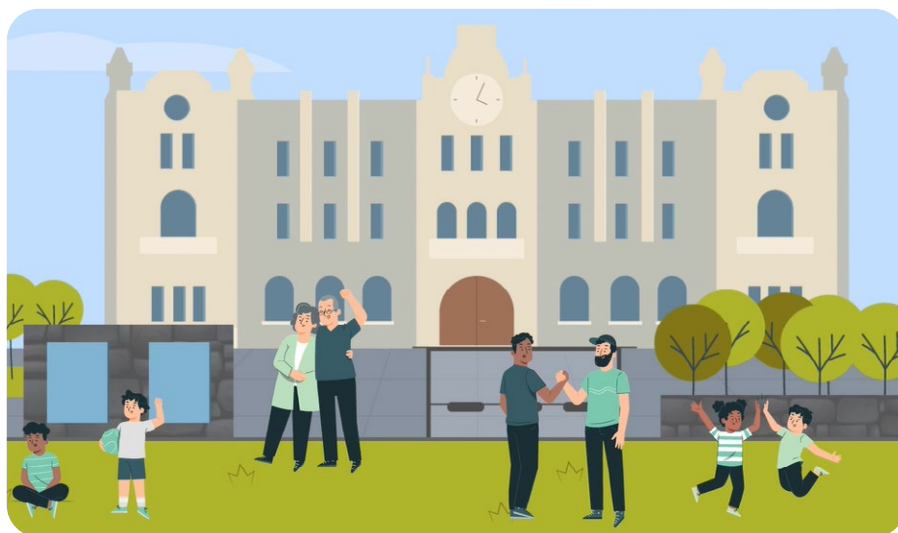
# ADAPTATION PLAN: APPROACH AND OBJECTIVES

2

*Cecilia Ribalaygua, Laura Asensio Martínez, Francisco García Sánchez*

Traditionally, adaptation to Climate Change is dealt with a sectoral perspective in order to facilitate management and responsibility sharing. However, the intrinsic complexity of this reality requires an **integrated multidisciplinary approach**, both for a rational understanding of the problem at its source and to address its management. The analysis of vulnerability and sectoral climate risk is tackled with this approach, arriving at solid criteria that allow the prioritisation of measures that reduce its effects and improve opportunities, avoiding maladaptation. With this objective in mind, the study is tackled from a holistic approach, with a multidisciplinary team of 17 researchers from different areas such as Physics, Meteorology and Climate, Engineering, Geography, Architecture, Urban Planning, Sociology, Archaeology and Tourism, among others, carrying out the whole process in an integrated manner.

In addition, the Plan is based on a **participatory approach**, through the design and organisation of processes of social and institutional participation, from its understanding at the beginning of the process, to the identification of risk, as well as the formulation and prioritisation of measures. This approach has strengthened an integral vision of the results and the adaptation needs in the face of climate change. Participation has also encouraged institutional linkages and support for its implementation, as well as public awareness and involvement.



With this dual multidisciplinary and participatory approach, the Santander Adaptation Plan aims to **increase municipal resilience** by identifying **adaptation strategies** based on the results of risk analysis associated with hazards, exposure and social, environmental and economic vulnerability in all census areas.

The **specific objectives** of the plan are as follows:



Contribute to **local knowledge on climate change** through the generation of local-scale climate scenarios based on the recent outputs of the Sixth IPCC Assessment Report (IPCC AR6).



Identify long-term **adaptation measures**, as well as concrete adaptation targets for each of them, ensuring that the scientific results of the study are transferred and become part of Santander's resilience strategy.



**Define the adaptation measures** that need to be developed to achieve the adaptation objectives, providing scientific information for their implementation (geolocalised where possible) as well as monitoring indicators for each of them.



**Geolocate and delimit geographical areas and sectors** of activity highly exposed to the main climate hazards, and identify current and future **vulnerability and risk indices** associated with the municipality of Santander.



Facilitate a **participatory process** to integrate in a consensual manner the perspectives, knowledge and experiences of scientists, decision-makers, managers, citizens and key actors at the local level.



**Development of tools to support decision-making** in the local adaptation process, based on scientific and technical knowledge and the updating and systematisation of local databases, necessary for monitoring vulnerability and improving adaptive capacity.